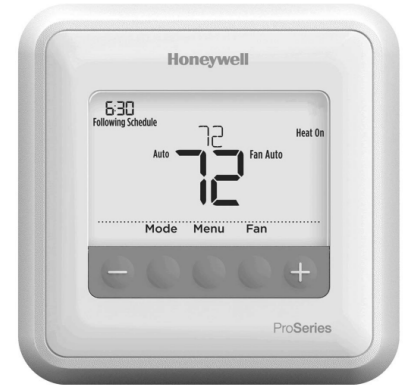




# Honeywell T4 Pro, T6 Pro, and T6 Pro with Wi-Fi Programmable Thermostats

## Introduction

Every T Series thermostat features on-screen menus with familiar installer setup (ISU) steps, helping to eliminate the learning curve that can come with a new product. With the new UWP mounting system, you can standardize your training program, install process and truck stock – helping your techs get in and out and on their way more quickly. The T Series has a snap-together design that enables you to easily move customers from a non-connected to a connected thermostat without having to replace the cover plate.



## Thermostat Features

### Standard Features

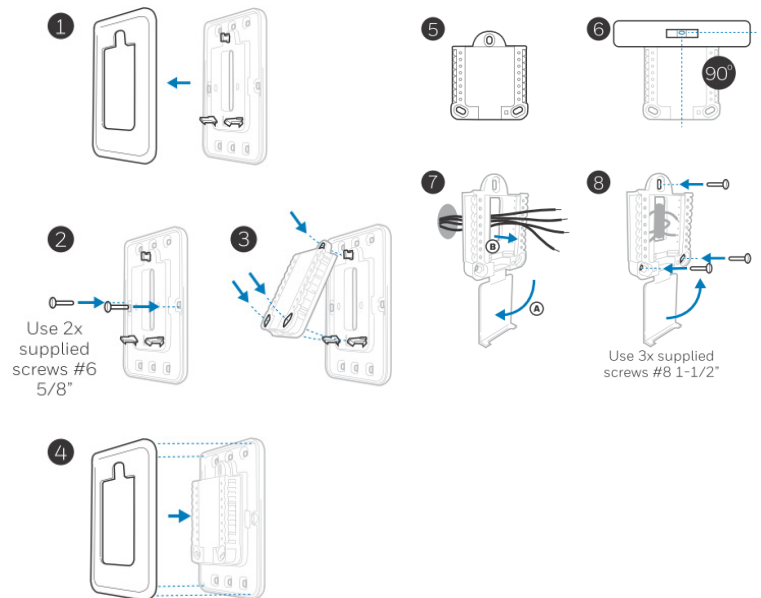
- Snap-Together design.
- Programmable scheduling.
- Battery backup.
- Easy to use interface.
- No tools required for wiring.
- Interchange between °C/°F
- Universal inputs and outputs including:
  - ° CO2 sensor input
  - ° Fresh air station input
- Configurable Economizer
- Configurable Scheduler

### Options and accessories

- Outdoor sensor may be used with 8403-090.
- Outdoor or Indoor sensor may be used with 8403-092.
- Ventilation control by schedule may be used with 8403-092.

### Integration

- Optional Wi-Fi when using 8403-092. Using the Lyric software, settings may be adjusted with a smartphone or tablet remotely. Easy to connect using standard Wi-Fi settings.



# Thermostat Summary

Bard #	Honeywell #	Stages	Programmable	Terminals
8403-089	TH4110U2005	1H/1C (HP w/o elect. Heat or AC with elect. heat)	Temp. Settings per Day 4, 2, 1, 0, Programs per Week 7, 5-2, 5-1-1 or Nonprogrammable	RC, R, C, W, AUX, Y, O/B, G, K, E
8403-090	TH6320U2008	3H/2C (HP) 2H/2C (AC)	Temp. Settings per Day 4, 2, 1, 0, Programs per Week 7, 5-2, 5-1-1 or Nonprogrammable	RC, R, C, W, W2, AUX, Y, Y2, O/B, G, K, E, L/A, S, S
8403-092	TH6320WF2003/V	3H/2C (HP) 2H/2C (AC)	Temp. Settings per Day 4, 2, 1, 0, Programs per Week 7, 5-2, 5-1-1 or Nonprogrammable	RC, R, C, W, W2, AUX, Y, Y2, O/B, G, K, E, U, U, L/A, S, S

Bard #	Display Color	Control Range	Languages	Replacements for Focus Pro Thermostats
8403-089	Blue	37°F to 102°F	English, Spanish, French	TH6320U1000, TH6220D1028 TH6220D1002, TH6110D1021 TH6110D1005, TH5320U1001 TH5220D1029, TH5220D1003 TH5110D1022, TH5110D1006 TH4210D1005, TH4110D1007 TH3210D1004, TH2210DV1006 TH2210DH1000, TH2110DV1008 TH2110DH1002, TH1210DV1007 TH1210DH1001
8403-090	Blue	37°F to 102°F	English, Spanish, French	
8403-092	Blue	37°F to 102°F	English, Spanish, French	

Bard #	System Switching	Programmable Fan	Ventilation Output	Humidification Control	Dehumidification Control	Auto Changeover	Backlit Display	Wi-Fi with Lyric	Keypad Lockout	Battery Backup	Low Battery Indicator	Wired Power from Unit	Service Reminder	Temporary Program Override	Temporary Temperature Hold	Remote wired Sensor
8403-089	Y	Y	N	N	N	Y	Y	N	N	Y	Y	Y	N	Y	Y	N
8403-090	Y	Y	N	N	N	Y	Y	N	N	Y	Y	Y	N	Y	Y	Outdoor only*
8403-092	Y	Y	Y	N	N	Y	Y	Y	N	N	N	Y	Y	Y	Y	Y*

\*Optional Outdoor Sensor: Honeywell part #C7089U1006, Optional Indoor Sensor: Honeywell part #C7189U1005

# Thermostat Interface - 8403-089 (T4 Pro) and 8403-090 (T6 Pro)

- System status information**  
Cool On/Heat On/Em Heat On, Recovery, Compressor Protection
- Actual time**  
Following time based schedule
- Schedule information**  
Following time based schedule
- Mode**  
Select system mode Heat/Off/Cool/Auto/EM Heat (emergency heat)
- Menu**  
Press to display options. Start here to set a program schedule
- Indoor temperature setpoint**  
Press + or - to change temperature setting
- Actual indoor temperature**
- Temperature/Navigation buttons**  
Press to increase or decrease temperature setpoint and to navigate menus and menu options
- Fan**  
Select Fan mode Auto/On

The screen will wake up by pressing any of the five buttons. If powered by the C wire, the screen stays lit for 45 seconds after you complete changes. If powered by battery only, the screen stays lit for 8 seconds. Depending on how your thermostat was installed, the screen light may always be on.



4.77" (121mm) Square

# Thermostat Interface - 8403-092 (T6 Pro with Wi-Fi Lyric)

- System status information**  
Cool On, Heat On, Emergency Heat On, Recovery, or Auto Changeover On.
- Schedule information**  
Following time-based or location-based temperature control.
- Desired Temperature**  
Displays the current desired temperature setting.
- Indoor Temperature**  
Displays the current indoor temperature.
- Mode**  
Select system mode: Auto/Heat/Cool/Off/EM Heat (Emergency Heat).
- Time, ISU #, or Alert #**
- Connection status information**  
Status of Wi-Fi Connection: Connected, Disconnected, or Wi-Fi is Off.
- Messaging**  
Shows device setup options, menu options, reminders, schedule overrides.
- Schedule period**  
Shows schedule period: Wake/Away/Home/Sleep.
- Fan**  
Select Fan mode Auto/On/Circulate.
- Menu**  
Touch to display options. Start here to set a program schedule.  
**Note: Long press of Menu button for 5 seconds to access Advanced Menu options.**

The screen will wake up by pressing the center area of the displayed temperature. The screen will stay lit for 45 seconds. Brightness can be adjusted in the Menu.



4.77" (121mm) Square



# Thermostat Terminals - 8403-089 (T4 Pro)



S	Not used	L/A - A	Not used	
S		O/B	Changeover valve	
Y	Compressor contactor (stage 1)	AUX - W2	Auxiliary heat (TH4210U only)	
Y2	Not used	E	Emergency heat (TH4210U only)	
G	Fan Relay	W	Heat relay (stage 1)	
C	24VAC common. For 2 transformer systems, use common wire from cooling transformer.	K	Connect to K on Wire Saver Module**	
U	Not used	R	24VAC power from heating transformer*	
U		Rc	24VAC power from cooling transformer*	

Note: Not all terminals may be used, depending on the system type that is being wired. The most commonly used terminals are shaded.

\* Terminal can be jumped using Slider Tab. See "Setting Slider Tabs" above.

# Thermostat Terminals - 8403-090 (T6 Pro)



S	Universal input for wired indoor or outdoor sensors	L/A - A	Heat Pump fault input (most common case)	
S		O/B	Changeover valve	
Y	Compressor contactor (stage 1)	AUX - W2	Auxiliary heat relay Heat relay (stage 2)	
Y2	Compressor contactor (stage 2)	E	Emergency Heat relay	
G	Fan Relay	W	Heat relay (stage 1)	
C	24VAC common. For 2 transformer systems, use common wire from cooling transformer.	K	Connect to K on Wire Saver Module**	
U	Unused	R	24VAC power from heating transformer*	
U		Rc	24VAC power from cooling transformer*	

Note: Not all terminals may be used, depending on the system type that is being wired. The most commonly used terminals are shaded.

\* Terminal can be jumped using Slider Tab. See "Setting Slider Tabs" above.

# Thermostat Terminals - 8403-092 (T6 Pro with Wi-Fi)



Conventional Systems		Heat pump systems	
Terminal	Description	Terminal	Description
S/S	Input for a wired indoor, outdoor sensor	S/S	Input for a wired indoor, outdoor sensor
Y	Compressor Stage 1	Y	Compressor Stage 1
Y2	Compressor Stage 2	Y2	Compressor Stage 2
G	Fan Relay	G	Fan Relay
C	24VAC Common wire from secondary side of cooling transformer (if 2 transformers)	C	24VAC Common wire from secondary side of cooling transformer
K*	Connect to K on Wire Saver Module	K*	Connect to K on Wire Saver Module
U/U**	Relay for ventilation	U/U**	Relay for ventilation
A		L/A	Connect to compressor monitor
W	Heat Stage 1	O/B	Changeover valve for heat pumps
W2	Heat Stage 2	Aux	Backup Heat
		E	Emergency Heat
R	24 VAC Heating transformer	R	24 VAC Heating transformer
Rc	24 VAC Cooling transformer	Rc	24 VAC Cooling transformer



Bard Manufacturing Company, Inc.  
Bryan, Ohio 43506  
www.bardhvac.com

Due to our continuous product improvement policy, all specifications subject to change without notice.

Before purchasing this appliance, read important energy cost and efficiency information available from your retailer.

Form No.  
S3568  
June 2018

Supersedes: 518