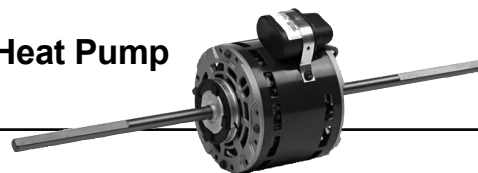


Permanent Split Capacitor Packaged Terminal A/C Heat Pump 5.0" Diameter, Open Air Over



APPLICATIONS:

To meet manufacturer's requirements for use in package terminal air conditioners or heat pump units.

FEATURES:

- Bearings Have All Angle Thrust System
- Suitable for Use With 370V Capacitors
- Continuous Duty, Air Over
- Automatic Reset Thermal Overload Protector
- **Discount Symbol: DS-3HAC**

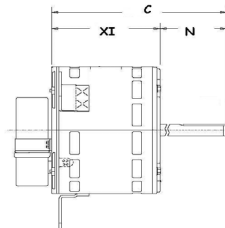


Figure A

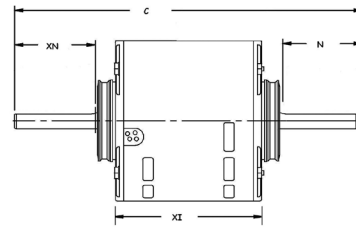


Figure B

Single Shaft, Direct Drive Blower (Figure A)

HP	RPM/ Spds.	Voltage	Catalog Number	List	Bearings	Cap. MFD	Amps	Shaft N	Shell XI	Total C	Mount	Ship Wt. (lbs)	Notes	OEM
1/30	1100/3	115	1374	\$250	SAB	5.0	0.5	8.5	4.1	13.4	Resilient	10	64	TR
	1100/3	115-127	4125	\$200	SAB	4.0	0.53	8.0	4.1	13.7	Resilient	6	64	IE
	1075/3	265	4126	\$162	SAB	3.0	0.39	7.0	3.8	10.8	Flex	6		IE
1/20	1100/3	115	1676	\$281	SAB	5.0	0.55	8.7	3.3	13.1	Resilient	9	64	TR
	1100/3	265	1965	\$172	SAB	4.0	0.45	3.5	4.3	7.8	3 Lugs	10	R	AM
	1075/3	208-230	4136	\$212	SAB	5.0	0.55	6.5	4.1	10.6	Flex	8		IE
	1075/3	265	1959	\$180	SAB	3.0	0.4	6.5	4.1	10.6	Flex	8		IE
	1075/3	277	4137	\$186	SAB	4.0	0.55	6.5	3.4	9.9	3 Lugs	8		IE
1/16	850/3	277	1678	\$190	SAB	4.0	0.5	2.3	4.1	6.3	3 Lugs	12	64	TR
1/15	1075/3	265	1961	\$185	SAB	4.0	0.6	7.0	3.8	10.8	Flex	12		IE
1/5	925/3	208-240	4129	\$176	SAB	6.0	1.9	7.0	4.6	11.6	Flex	12		IE
1/4	975/3	115	4130	\$191	SAB	12.5	6.0	7.0	4.8	11.8	Flex	13		IE
	1050/3	277	1962	\$201	SAB	7.5	1.6	7.0	5.1	12.6	Flex	13		IE
	1075/3	265	4131	\$199	SAB	10.0	1.6	5.25	4.8	10.1	Flex	13		IE

Dual Shaft, Direct Drive Blower (Figure B)

HP	RPM/ Spds.	Voltage	Catalog Number	List	Bearings	Cap. MFD	Amps	Shaft N	Shaft XN	Shell XI	Total C	Mount	Ship Wt. (lbs)	Notes	OEM
1/15	1100/3	115	1090	\$294	SAB	5.0	0.80	9.7	10.8	3.8	25.4	Resilient	7		TR
1/12	1150/3	277	1960	\$189	SAB	5.0	0.69	7.6	8.3	4.3	21.2	Hub Ring	9	64	IE
	1375/3	115-127	4127	\$206	SAB	6.0	1.35	8.0	8.25	3.8	21.2	Hub Ring	9	64	IE
1/8	1500/3	277	1964	\$218	SAB	4.0	0.8	7.8	8.3	4.1	21.2	Resilient	10	64	
1/6	1450/3	115-127	1257	\$221	SAB	5.0	2.55	8.0	8.3	4.1	21.4	Hub Ring	11	64	IE
	1625/4	115	8525	\$239	SAB	5.0	2.2	8.0	8.0	4.2	24.0	Resilient	12		

AM = Amana® IE = IEC®† TR = Trane®†

Note 64 Capacitor Included
Note R Reversible

† All marks shown within this document are properties of their respective owners.

