

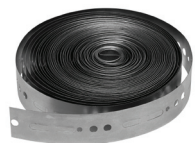
Metal and Plastic Hanger Strap

- Quick and inexpensive way to hang pipe from joists or rafters
- Plastic nail holes are 1/8" in diameter and spaced 3/4" apart
- Metal available in 24 and 28 gauge steel



Tab Tape

- Self fastening Hanger Strap
- No nuts or bolts required



G|B|B Guards, Bars & Brackets

Stud Guards and FHA Plates

- Provide protection for pipes and wiring installations
- Made of 16 or 18 gauge steel



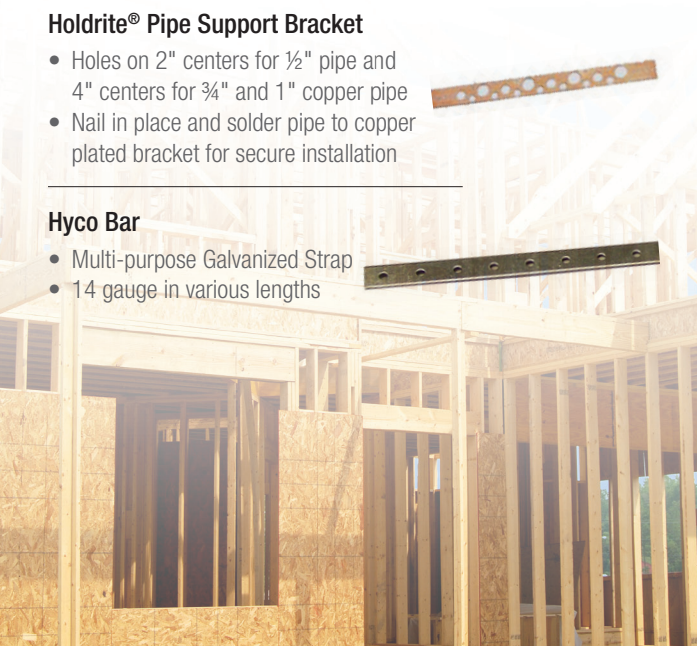
Holdrite® Pipe Support Bracket

- Holes on 2" centers for 1/2" pipe and 4" centers for 3/4" and 1" copper pipe
- Nail in place and solder pipe to copper plated bracket for secure installation



Hycobar

- Multi-purpose Galvanized Strap
- 14 gauge in various lengths



Since 1916, Oatey has been manufacturing quality products for the plumbing industry. Oatey's market-leading products include solvent cements for joining plastic pipe and fittings, vent stack roof flashings, solder and flux for joining copper pipe, washing machine outlet boxes, Sure-Vent® air admittance valves, residential and light commercial drains and other related plumbing specialty products.



Pipe Support Products



4700 W. 160th St. | Cleveland, OH 44135
800.321.9532 | Fax: 800.321.9535
www.oatey.com

DISTRIBUTED BY:

OATEYSCS®
Supply Chain Services

4675 W. 160th St. | Cleveland, OH 44135
216.267.7100 / 800.321.9532
Fax: 216.267.9845 / 800.321.9535
www.oateyscs.com

This information is based on data believed to be reliable but Oatey makes no warranties, express or implied, as to its accuracy and assumes no liability arising out of its use. The data listed falls within the normal range of product properties but should not be used to establish specification limits or used alone as the basis of design. Oatey's liability to purchasers is expressly limited to the terms and conditions of sale. Oatey is a trademark of Oatey Co.

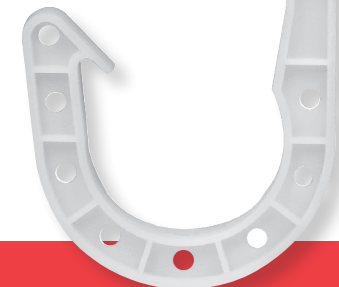
Stand-Off Half Clamp with Nail



DuoFit™
Pipe Support System



DWV J-Hook



Oatey offers a complete range of pipe support products for all of your application needs. Whether it be securing supply lines, DWV pipe or supporting your work with brackets and bars, **you can count on us for quality, performance and innovation.**



DWV J-Hook

- With pre-loaded nails in stem
- Diagonal nail path for use in tight applications
- Locking finger for tight hold and in inverted applications
- Additional holes allow securing cable ties and other fasteners



Stand-Off Half Clamp with Nail

- Clamp keeps pipe completely off stud for less noise and protection
- Pre-loaded nail feature provides fast and easy installation
- Made of high impact polypropylene; temperature range 0°F to 160°F



DuoFit™
pipe support system

- One clamp fits both 1/2" and 3/4" size pipe
- Use on copper, CPVC and PEX
- Move pre-loaded nail to keep pipes off stud

Half Talon Clamp Pipe Clamps with Nail
(Fits 1/2" to 1" CTS Sizes)

- Pre-loaded nail feature provides fast and easy installation
- Made of high impact polypropylene; temperature range 0°F to 160°F



Full Clamp Pipe Clamps with Nails
(Fits 1/2" to 1" CTS Sizes)

- With pre-loaded nail feature, clamp completely encompasses the pipe
- Made of high impact polypropylene; temperature range 0°F to 160°F



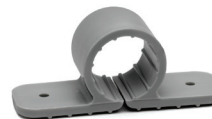
Suspension Pipe Clamps
(Fits 1/2" to 1 1/2" CTS Sizes)

- Eliminates contact between the pipe and framing surface, reducing water line noise
- Made of high impact polypropylene; temperature range 0°F to 160°F



Standard Pipe Clamps
(Fits 1/2" to 1 1/2" CTS Sizes)

- Design allows pipe to be flush mounted to walls and joints
- Made of high impact polypropylene; temperature range 0°F to 160°F



Versa-Link™ Modular CTS Clamp
(Fits 1/2" CTS Size)

- Modular design for quick connections
- Available in one-pipe clamp or two-pipe clamp configurations
- Pre-loaded with nails or drill point screws



Insulating Pipe Clamps
(Fits 1/2" to 1" CTS Sizes)

- Designed to eliminate notching and wrapping of pipe when running water lines through framing
- Made of non-corrosive low-density polyethylene



Metal Stud Insulating Pipe Clamp
(Fits 1/2" to 1" Sizes)

- Reduces noise and vibration when running water lines through metal studs
- Uses 1-11/32" hole diameter, with tabs for easy adjustment



Flat Tube Nailers

- Copper plated or plastic coated tube nailers provide quick nail support



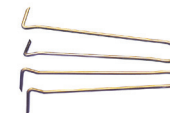
Copper Tube Straps

- Allows pipe to be flush mounted to walls, joists and rafters



Copper And Steel Pipe Hooks

- Self nailing, supports pipe from rafters or joists



CTS J-Hook

- Support copper and CPVC water supply lines from joists and rafters
- Nails flush against a wall or stud



Copper Plated Bell Hangers

- With 13/16" standoff from mounting surface
- Recessed mounting screw has piece point for use on metal studs



Copper Plated Milford Hangers

- Hang copper tube piping from joists
- Top set plate swivels and locks into place



Cable, Conduct & Duct Ties

- Enables cables and tubing to be secured together
- Made of nylon, locking device provides a non-slip grip

